

AutoVue™

ELECTRO-MECHANICAL PROFESSIONAL

AutoVue Electro-Mechanical Professional is Cimmetry's most complete AutoVue offering, providing manufacturing firms with a secure and reliable solution for efficient design reviews and streamlined cross-functional collaborative processes. With AutoVue Electro-Mechanical Professional organizations can bridge the gap between MCAD and EDA, and enhance cross-functional and departmental interaction earlier in the product development process resulting in improved productivity, reduced errors and accelerated time to market.

WHY IS AUTOVUE RIGHT FOR YOU?

- **Bridge the Gap between MCAD and EDA with Electro-Mechanical DMU**

Overcome the challenges posed by the growing crossover between the electronic and mechanical arenas. With AutoVue Electro-Mechanical Professional unique Digital Mockup capabilities, users can combine MCAD and EDA parts and simulate models and assemblies on-the-fly to project real-world manufacturability without the expense and time associated with conventional physical prototypes.

- **Standardize Document Reviews and Shorten Design Cycles**

Provide global team members with greater visibility into the product development process, allowing them to instantly access crucial product-related information and efficiently communicate feedback, comments, suggestions and change requests. Document review and troubleshooting processes can be standardized on a single solution, avoiding organization and technology issues that hinder collaboration and impact negatively on cost, schedules, and product quality.

- **Simple IT Infrastructure with Native Document Viewing**

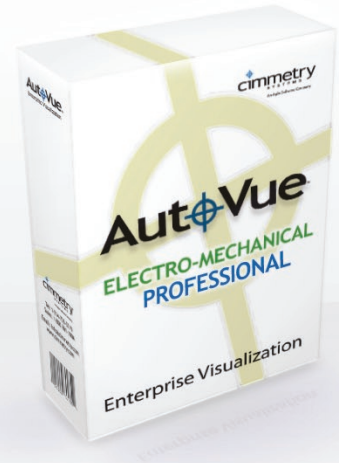
AutoVue Electro-Mechanical Professional delivers native document viewing, avoiding error-prone document conversions. Since file conversion is not required, AutoVue Electro-Mechanical Professional eliminates the cumbersome task of creating and managing a double set of data, i.e. the original document and the converted/neutral files. The cost and complexity of maintaining multiple client-side viewers and server-side conversion systems is eliminated. Storage costs are also kept to a minimum as converted documents are not being emailed around to everyone for review.

- **Perform Simultaneous Multi-Party Real Time Collaboration***

Allow extended global teams to communicate as if they were in the same room. Simultaneously review and markup documents, assign action items, and resolve design issues in real-time within AutoVue Electro-Mechanical Professional. AutoVue's built in real-time collaboration capabilities are available to customers at no additional cost.

- **Protect Valuable Intellectual Property**

With AutoVue Web Edition, an image of the document is streamed to desktops for viewing; original documents never leave the server, and no local temp file or local cache file of any kind is created in the process. Sensitive information and valuable intellectual property remain protected at all times.



**VIEW, REVIEW,
AND COLLABORATE
MORE EFFICIENTLY
AND SECURELY
ON EDA AND
MCAD DESIGNS**

"As engineering manager, I can review the designs in process, access the features and ask questions. It allows me to review and check designs as they are being modeled, saving time in the formal review check before the final release of drawings."

Lorne Dyke
Apex Design Technology

* AutoVue Web Edition only

KEY FEATURES AND CAPABILITIES

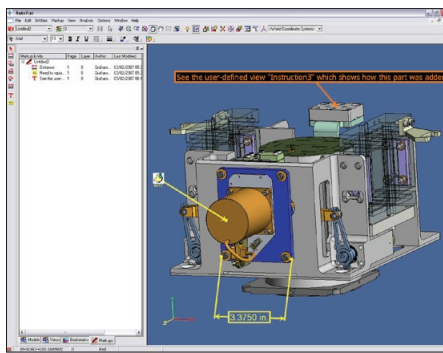
MAIN CAPABILITIES

View Hundreds of Document Types

Open, view and markup a wide array of document types, including EDA PCB layouts & schematics, 3D/2D CAD, Office, PDF and graphics, without requiring the authoring applications. Visit our website at www.cimmetry.com for a complete list of supported formats.

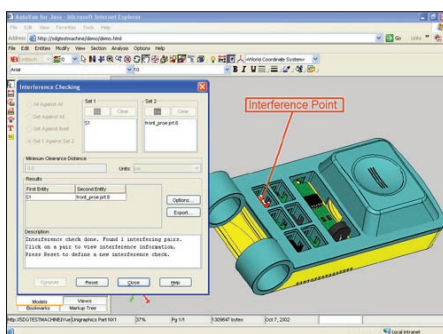
Markups and Comments

Make it easy to manage and track comments and feedback from all reviewers with AutoVue markup entities. Click here to see a list of 3D markup entities.



Create an Electro-Mechanical Digital Mockup (DMU)

Combine native 3D parts – from disparate 3D CAD systems – and EDA designs into a single digital assembly to easily create virtual prototypes, check for interference and validate design integrity.



Advanced Printing

Save time by automating the printing process, batch print files, customize print settings and save printing configurations.

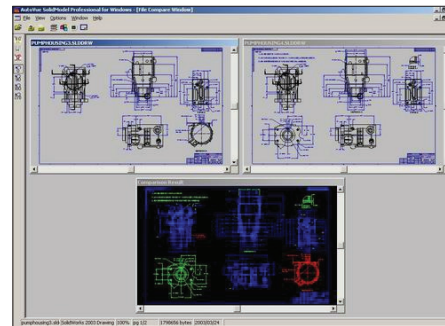
MCAD CAPABILITIES

Perform Precise Measurements

Speed up design reviews by performing precise measurements on 3D and 2D designs, including mass properties, distance, areas, angles, etc.

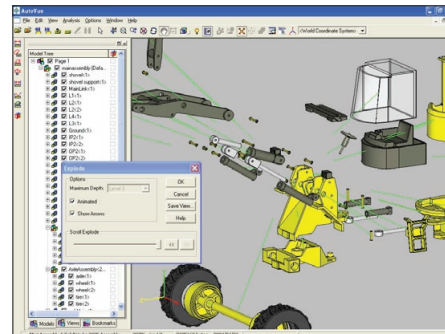
Compare Designs

Compare 3D assemblies to determine what parts have been added, removed or changed. This unique AutoVue feature goes beyond a graphical comparison and includes the ability to detect changes to non-graphical attributes at the part or assembly level. AutoVue also offers the possibility to graphically compare 2D files.



Create Exploded Views

Explode complex 3D assemblies to get to the component level faster and create clear illustrations for control documents, such as assembly and maintenance instructions.



Section 3D Models

Cross-section assemblies to draw attention to internal structures and assembly relationships or measure dimensions within individual parts.

View 2D Modes and Drafts of Models

Quickly access the 2D drafts associated with your 3D models.

Leverage Existing IT Infrastructure with Easy Integration

AutoVue Electro-Mechanical Professional can be integrated into existing Document Management, Product Lifecycle Management or Enterprise Resource Planning systems, providing a comprehensive enterprise visualization platform that makes original documents available to the entire organization and supply chain in a secure and controlled manner, wherever they may reside.

In an integrated environment, markups and annotations can be saved back into the file repositories of enterprise systems, maintaining document control.

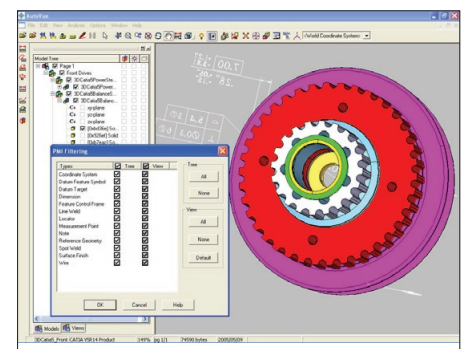
Visit our website at www.cimmetry.com to learn more about AutoVue's integration capabilities.

Perform 3D Entity Search

Search and filter for parts in a 3D assembly based on a variety of native file attributes to quickly find the information you need.

Share PMI, GD&T and FTA data

Access PMI, GD&T and FTA, data and reliably convey product design information directly to the shop floor, manufacturing, quality and engineering departments, decreasing the time required to resolve design issues, and avoiding design and fabrication errors. Click here to see a list of supported PMI entities.



KEY FEATURES AND CAPABILITIES (Continued)

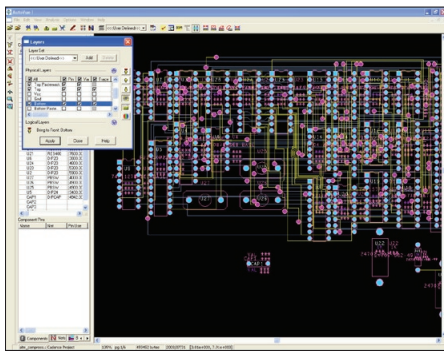
EDA CAPABILITIES

Access the Full Embedded Intelligence in a PCB

Access the embedded intelligence in a PCB with attribute querying for Traces, Nets, components and Geometry Library Objects.

Easy Layer Navigation & Control

Turn on and off physical layers and entity types associated with each layer, and bring layers to the top with a simple click of the mouse. Access layer sets (views) as predefined in the authoring application or define your own.

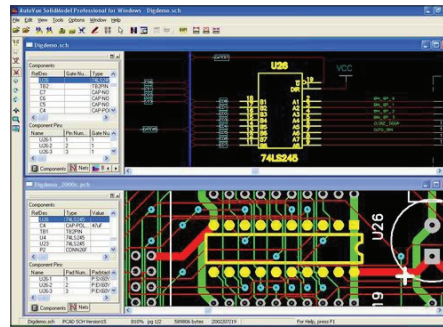


Perform Precise Measurements

Speed up design reviews by precisely measuring to the endpoint / midpoint of a line, the intersection of two nets, the center of a circle, or on any pin / via / symbol origin. Use the Minimum Distance tool to measure the proximity of nets, pins and pads to one another from edge of net or components

Cross Probe between a PCB Layout, its Related Schematics or 3D PCB

Select a net or component in a Schematic and it is instantaneously located and highlighted in the Layout or vice versa. Easily find all occurrences of a particular component or net and navigate between them, should they be present on multiple sheets of a schematic. In addition, AutoVue offers an automatic mode that intelligently determines the appropriate view (layout, schematic, 3D model) for the cross probe target.

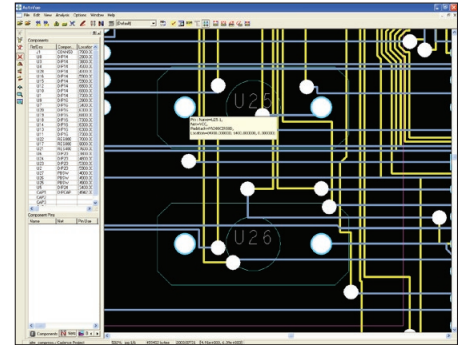


Validate PCB Design Integrity

Test for manufacturability or design violations by setting multiple tolerances/constraints, and share this information with team members to shorten the overall design cycle and accelerate production.

Instantly See Entity Properties

Access important entity information without having to repeatedly drill down into an entity's details. With AutoVue's tooltips, entity properties are instantly displayed by hovering the mouse over a specific element of a schematic or PCB layout.



Search for EDA Element

Easily search for multiple Components, Nets, Pins, Vias, Devices or Parts based on a variety of attributes, keywords, and values.

Download a fully functional demonstration copy, try an online demo, or schedule a real-time collaboration meeting using AutoVue at <http://www.cimmetry.com>.



An Agile Software Company

Cimmetry Systems, Corp.
400 Sainte Croix, Suite 200 East,
Montreal, QC, H4N 3L4, Canada

Telephone: 1 514 735 3219
Sales: 1 800 361 1904
Fax: 1 514 735 6440

General Enquiries: info@cimmetry.com
Sales Enquiries: sales@cimmetry.com

Copyright © 2007, Cimmetry Systems Corporation. All Rights Reserved. Cimmetry Systems, Cimmetry, AutoVue and their logos are the designated trademarks herein as trademarks of Cimmetry Systems Corporation in the U.S., Canada and/or other countries. All other brands or product names are trademarks or registered trademarks of their respective holders.

www.cimmetry.com