

# AutoVue™

## 2D PROFESSIONAL

AutoVue 2D Professional provides extended teams with instant access to crucial project information contained in 2D CAD and Office documents. Its native document viewing, markup and real-time collaboration capabilities deliver the foundation for an efficient collaboration process. Users can easily and digitally communicate and track feedback using a single solution, accelerating design reviews and reducing costly errors caused by misinterpretations. Communication and collaborative workflows are streamlined throughout the entire project lifecycle, allowing organizations to complete projects faster and within budget.

### WHY IS AUTOVUE RIGHT FOR YOU?

- **Expedite Design Reviews and Eliminate Paper**

Provide global team members with an all digital method of accessing, collaborating and delivering feedback on documents. With AutoVue 2D Professional, document review and troubleshooting processes can be standardized on a single solution. With the elimination of paper in the design review process, AutoVue 2D Professional also helps to reduce printing and handling expenses, as well as travel costs and time out of the office.

- **Simple IT Infrastructure with Native Document Viewing**

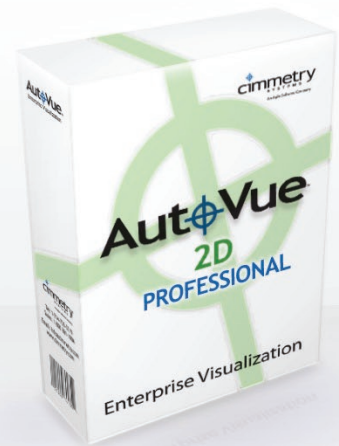
AutoVue 2D Professional handles native document viewing, avoiding error-prone document conversions. Since file conversion is not required, AutoVue 2D Professional eliminates the cumbersome task of creating and managing a double set of data, i.e. the original document and the converted/neutral files. The cost and complexity of maintaining multiple client-side viewers and server-side conversion systems is eliminated. Storage costs are also kept to a minimum as converted documents are not being emailed around to everyone for review.

- **Perform Simultaneous Multi-Party Real Time Collaboration\***

Allow extended global teams to communicate as if they were in the same room. Simultaneously review and markup documents, assign action items, and resolve design issues in real-time within AutoVue 2D Professional. AutoVue's built in real-time collaboration capabilities are available to customers at no additional cost.

- **Protect Valuable Intellectual Property**

With AutoVue Web Edition, an image of the document is streamed to desktops for viewing; original documents never leave the server, and no local temp file or local cache file of any kind is created in the process. Sensitive information and valuable intellectual property remain protected at all times.



**VIEW, REVIEW, AND COLLABORATE MORE EFFICIENTLY AND SECURELY ON YOUR 2D CAD DESIGNS**

*“AutoVue delivers seamless collaboration among our project teams all over the world. Engineers, architects, contractors and regulators use AutoVue to efficiently access, review and comment on documents and deliver feedback on the fiscal, technical, engineering, environmental, and regulatory issues inherent in each project.”*

Lars Fuglsang  
Senior Project Manager,  
The Ramboll Group

\* AutoVue Web Edition only

## KEY FEATURES AND CAPABILITIES

### View Hundreds of Document Types

Open, view and markup a wide array of document types, including 2D CAD, Office, PDF and graphics, without requiring the authoring applications. Visit our website at [www.cimmetry.com](http://www.cimmetry.com) for a complete list of supported formats.

### Easily Navigate Complex CAD Documents

AutoVue delivers three levels of zoom; Bird's Eye view, Magnifying Window, and Magnifying glass, which facilitate the navigation of large CAD drawings, and allow users to quickly locate the desired area on a drawing.

### Markups and Comments

Communicate feedback change requests and comments in an effective and timely manner with AutoVue 2D markups. Add text, clouds, sticky notes and hyperlinks to documents. Manage and track comments and feedback from all reviewers. Visit our website at [www.cimmetry.com](http://www.cimmetry.com) for a complete list of markup entities.

### Perform Precise 2D Measurements

Speed up design reviews by performing precise snap to measurements including distance, areas, angles, arcs, etc.

### Compare 2D Designs

Compare 2D drawings to determine what has been added, removed or changed. The results of the comparison are color-coded and shown in a third window to instantly identify changes.

### Text Search

Search for text in 2D CAD and text-based documents to quickly find the information you need.

### Batch Printing

Save time by automating the printing process, batch print files, customize print settings and save printing configurations.

### Convert Documents

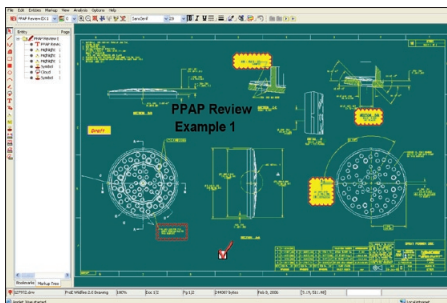
For those organizations that need to convert documents for regulatory compliance, AutoVue offers the possibility to convert 2D CAD drawings, images and Office documents to TIFF, PDF or several other neutral file formats.

## Leverage Existing IT Infrastructure with Easy Integration

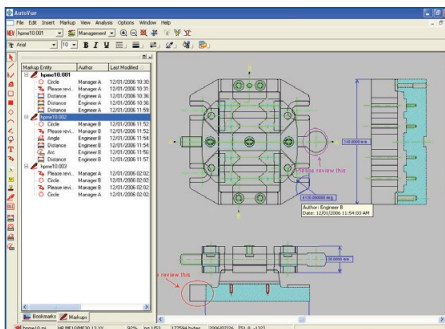
*AutoVue 2D Professional can be integrated into existing Document Management, Product Lifecycle Management or Enterprise Resource Planning systems, providing a comprehensive enterprise visualization platform that makes original documents available to the entire organization and supply chain in a secure and controlled manner, wherever they may reside.*

*In an integrated environment, markups and annotations can be saved back into the file repositories of enterprise systems, maintaining document control.*

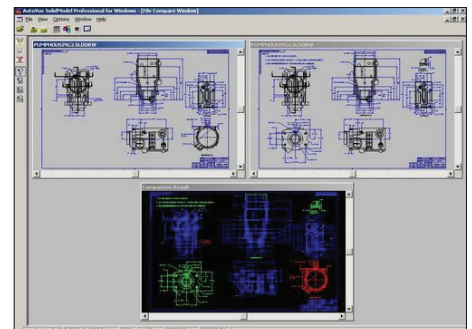
*Visit our website at [www.cimmetry.com](http://www.cimmetry.com) to learn more about AutoVue's integration capabilities.*



View and markup 2D CAD files.



Perform Precise Measurements.



Compare two versions of a CAD drawing.

**Download a fully functional demonstration copy, try an online demo, or schedule a real-time collaboration meeting using AutoVue at <http://www.cimmetry.com>.**



An Agile Software Company

**Cimmetry Systems, Corp.**  
400 Sainte Croix, Suite 200 East,  
Montreal, QC, H4N 3L4, Canada

Telephone: 1 514 735 3219  
Sales: 1 800 361 1904  
Fax: 1 514 735 6440

General Enquiries: [info@cimmetry.com](mailto:info@cimmetry.com)  
Sales Enquiries: [sales@cimmetry.com](mailto:sales@cimmetry.com)

Copyright © 2007, Cimmetry Systems Corporation. All Rights Reserved. Cimmetry Systems, Cimmetry, AutoVue and their logos are the designated trademarks herein as trademarks of Cimmetry Systems Corporation in the U.S., Canada and/or other countries. All other brands or product names are trademarks or registered trademarks of their respective holders.

[www.cimmetry.com](http://www.cimmetry.com)